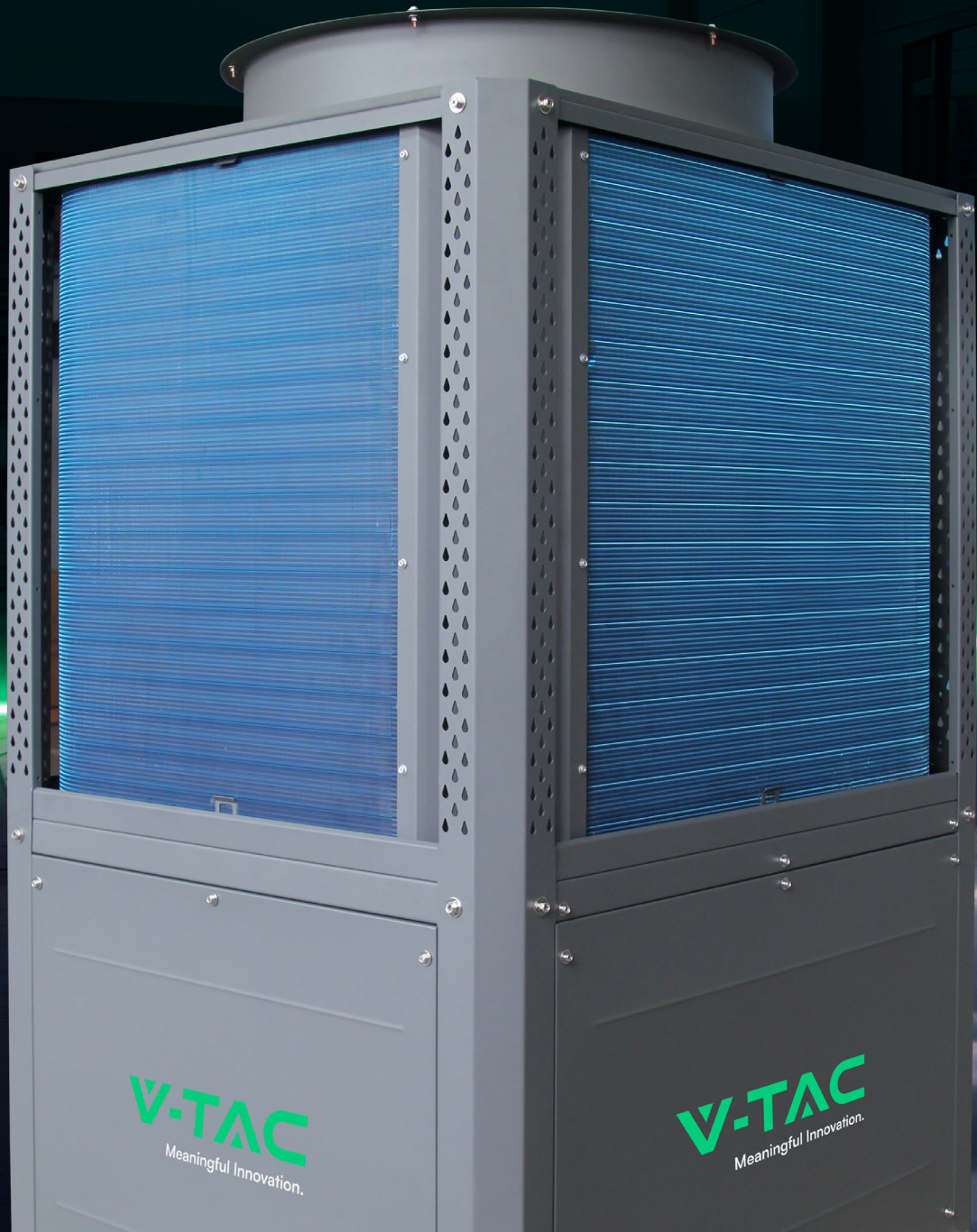


ETER Series

V-TAC
Meaningful Innovation.

NEW MEMBER IN ETER SERIES

V-TAC R290 PLUS ETER Series proudly introduce
a new member, **50kW Monoblock** Air-to-Water Heat Pump.



The biggest one

ETER Series

This heat pump offers a revolutionary solution that empowers you to create highly efficient heating system for large commercial buildings and all kinds of industrial facilities.

Our newest model delivers exceptional power and flexibility. You can install one 50kW device or choose to combine multiple units to generate up to 800kW output.

High system efficiency combined with inverter technology and use of R290 refrigerant guarantee effective heating and convenient scaling for larger buildings and the ones with higher thermal requirements.

To ensure longevity and best performance of the 50kW unit we have equipped it with 4 evaporators: one on each side of the device (quadrangle). We have used NANO coating for evaporators for more efficient condensate removal from the fins.

Efficient fan with vertical motor, use of flange connections, planet friendly R290 refrigerant, only start the list of our product advantages.



Refrigerant R290



ERP A++



IoT App



5 inch LCD display



5 years warranty



Quiet operation



Metal housing



Inverter compressor



Efficient operation to -25°C



Connect several heat pumps

V-TAC

Meaningful Innovation.

V-TAC Model		VT-M50KW-P3-DC/INV-290-S-B-SU
Power	kW	50
Power Supply	V / Ph / H	380~415/3/50
Nominal Heating (Max) <small>(A7/6°C, W30/35°C)</small>	Heating Capacity	17.56~50
	Power Input	2.61~12.88
	Current Input	5.46~18.8
	COP	4.24~5.57
Nominal Heating (Max) <small>(A7/6°C, W47/55°C)</small>	Heating Capacity	17.95~49
	Power Input	3.48~17.2
	Current Input	7.78~26.8
	COP	2.99~3.45
Nominal Cooling <small>(A35/24°C, W12/7°C)</small>	Cooling Capacity	10~32
	Power Input	3.84~13.3
	Current Input	6.42~20.56
	EER	/
ERP Level (Outlet water temp. at 35°C)	/	A++
ERP Level (Outlet water temp. at 55°C)	/	A++
SCOP (55°C)	/	3.33
Rated / MAX. Input Power	kW	19.84
Rated / MAX. Input Current	A	30.30
Refrigerant / Charge / GWP	.../kg	R290/2.4*2/3
CO ₂ Equivalent	/	0.015t
Rated water flow	m ³ /h	8.60
Fan type	/	Axial flow, 3 blade
Fan quantity	/	1
Fan motor type	/	DC inverter
Compressor	/	DC inverter
Circulating pump	/	Inverter type / Built-in
Condenser heat-exchanger	/	Double-pipe heat exchanger
Evaporator heat-exchanger	/	Finned heat exchanger
IP Class	/	IPX4
Sound pressure at 2m distance	dB(A)	60
Max outlet water temperature	°C	75
Water piping connections	/	G1-1/2
Operating temperature range (Heating mode)	°C	-25~45
Operating temperature range (Cooling mode)	°C	15~45
Unpacked Dimensions (L×D×H)	mm	1155*990*1880
Packed Dimensions (L×D×H)	mm	1280*540*1450
Unpacked Weight	kg	500
Packed Weight	kg	515



Connect a system of heat pumps, up to 800kW.

V-TAC
Meaningful Innovation.

V-TAC
Meaningful Innovation.

V-TAC

Meaningful Innovation.

V-TAC Poland Sp. z o.o

ul. Obornicka 52
60-002 Złotniki
+48 22 42 82 644
bok@vtac.com.pl

www.vtacexports.com



Plac Wolności 2/8
61-738 Poznań

www.ekotez.pl

Enter
the world
of V-TAC.

